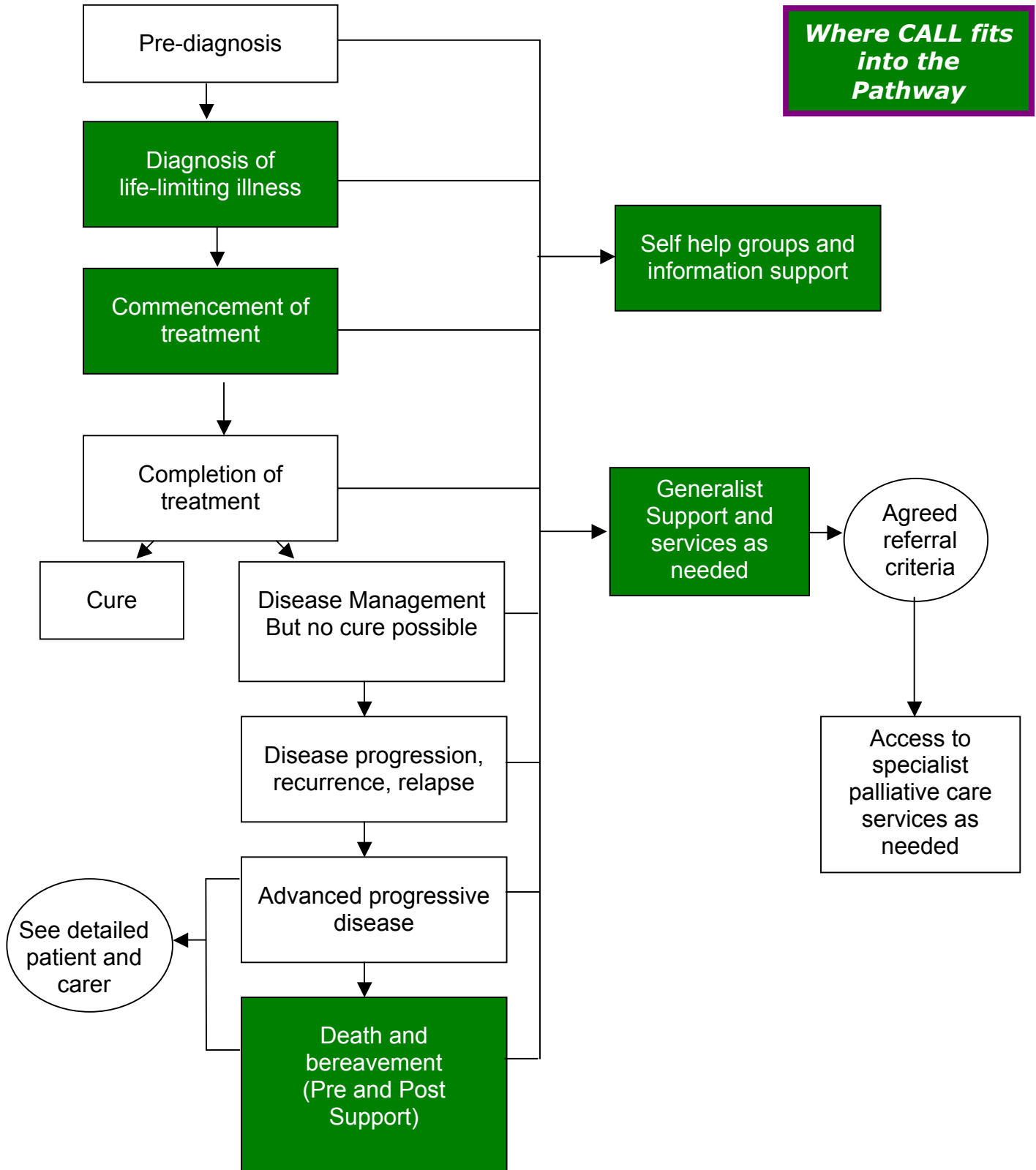
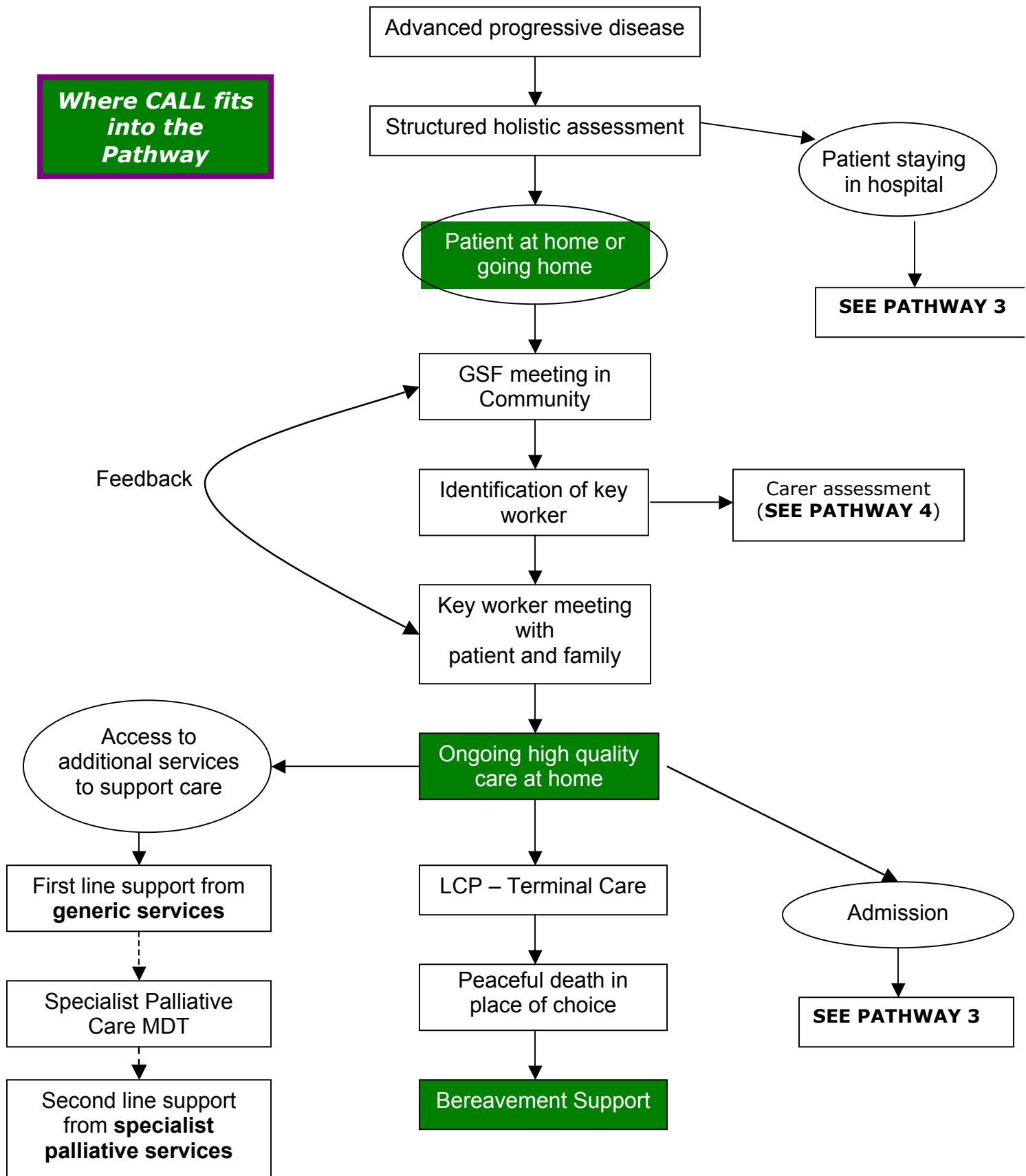


# Patient Pathways

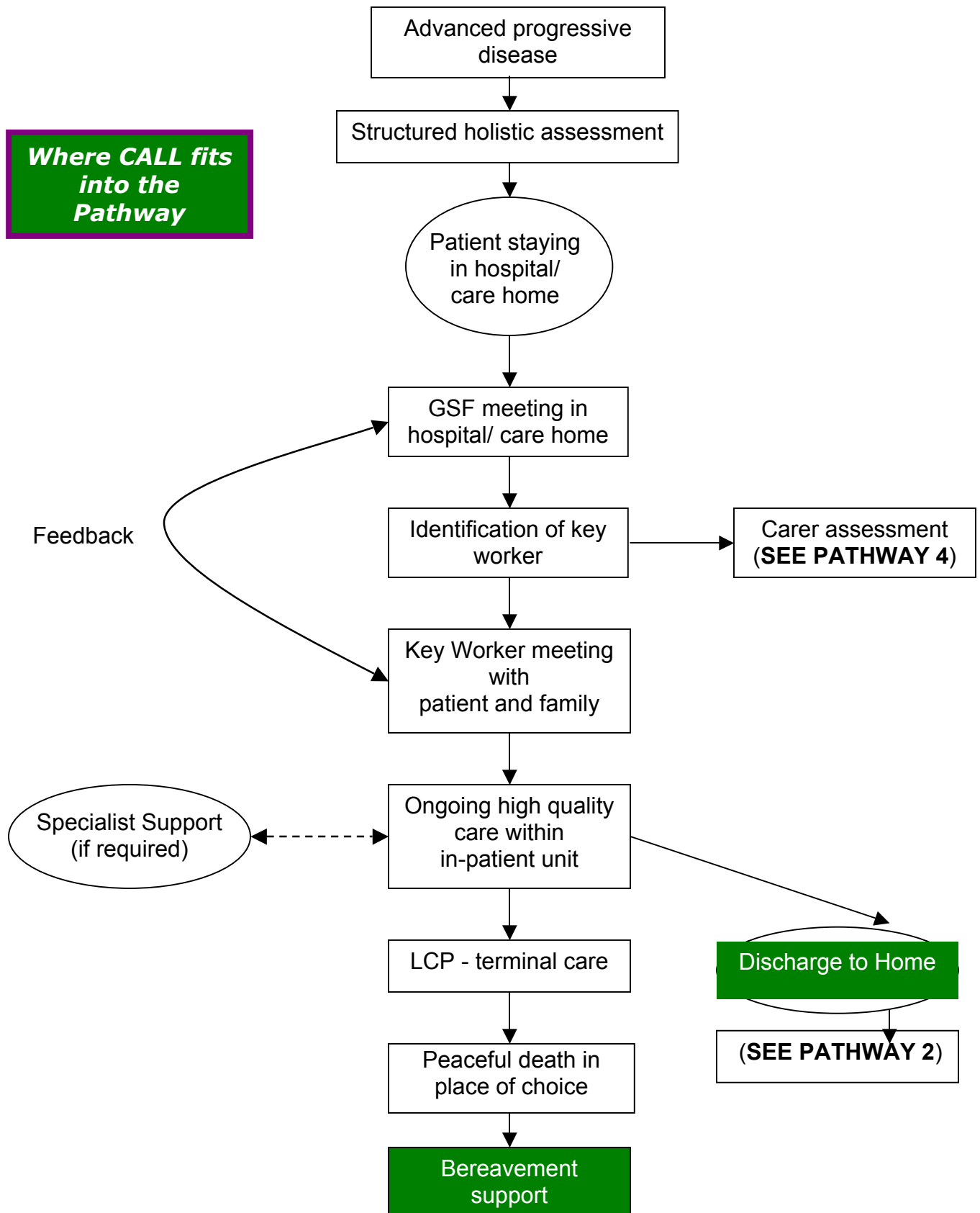
## Pathway 1 – Key Points in Patient Supportive and Palliative Care Pathway



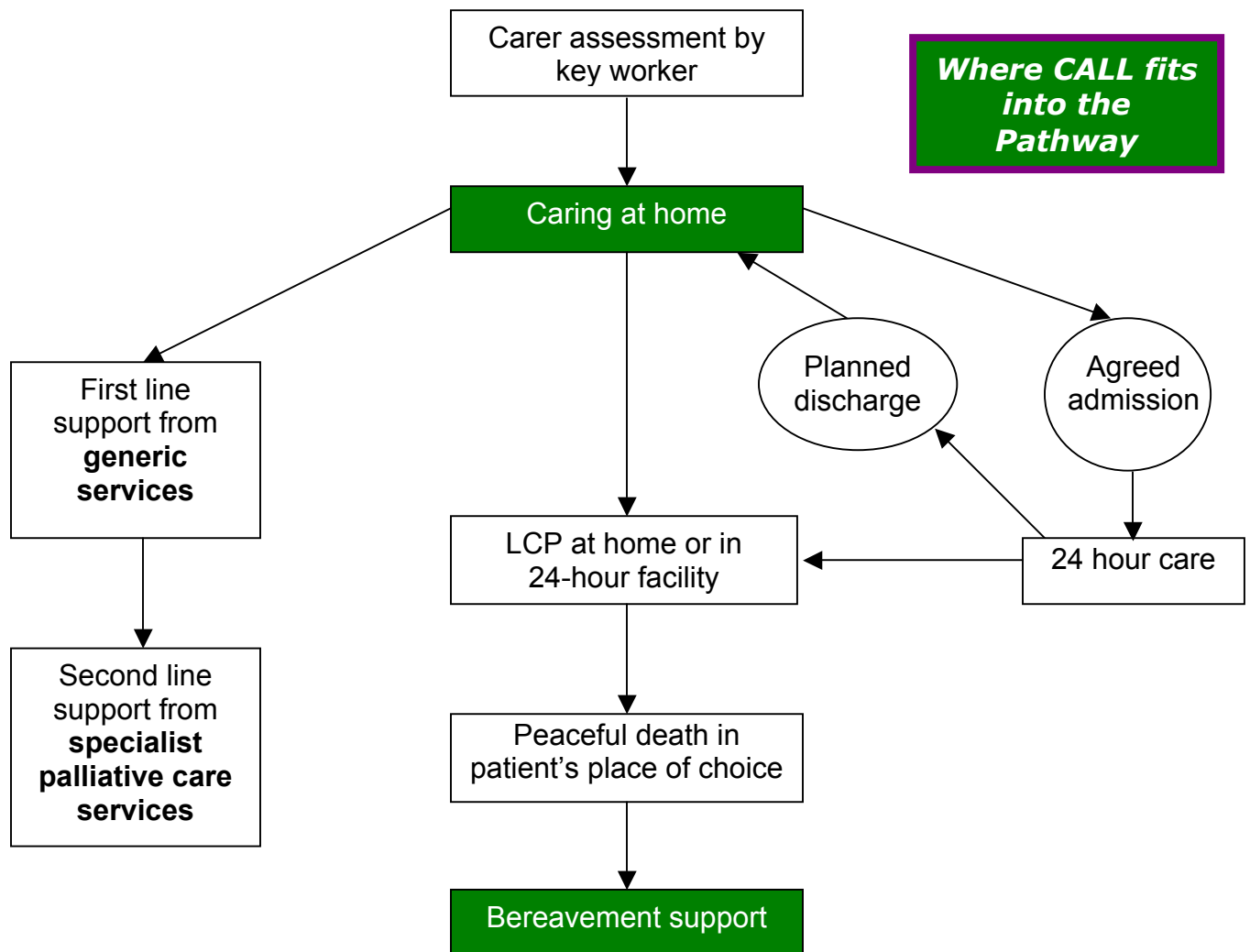
## Pathway 2 – Patient End of Life Care Pathway at Home



### Pathway 3 – Patient End of Life Care Pathway in Hospital or Care Home



## Pathway 4 - Carer Pathway at Home (For End of Life Care Patients)



### Services that CALL can provide to Carers:

- Information and contact points
- Social advice and support
- Psychological support and counselling
- Respite care

